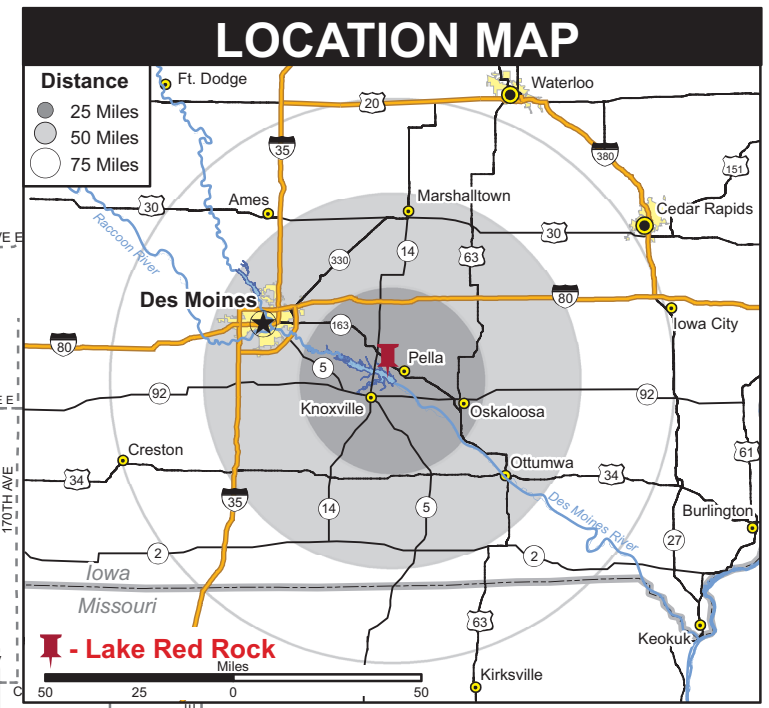
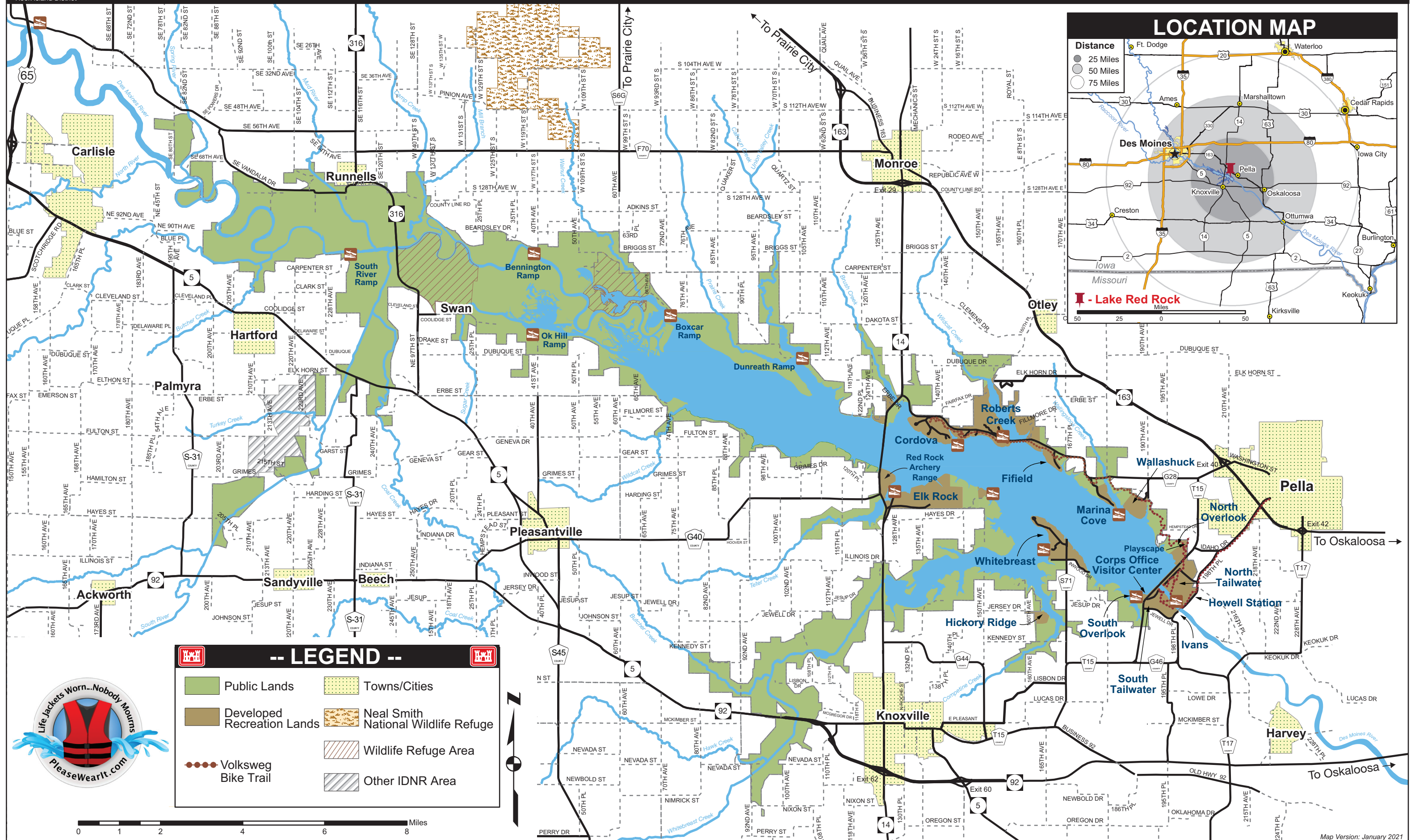




US Army Corps
of Engineers®
Rock Island District

Lake Red Rock

Area Map

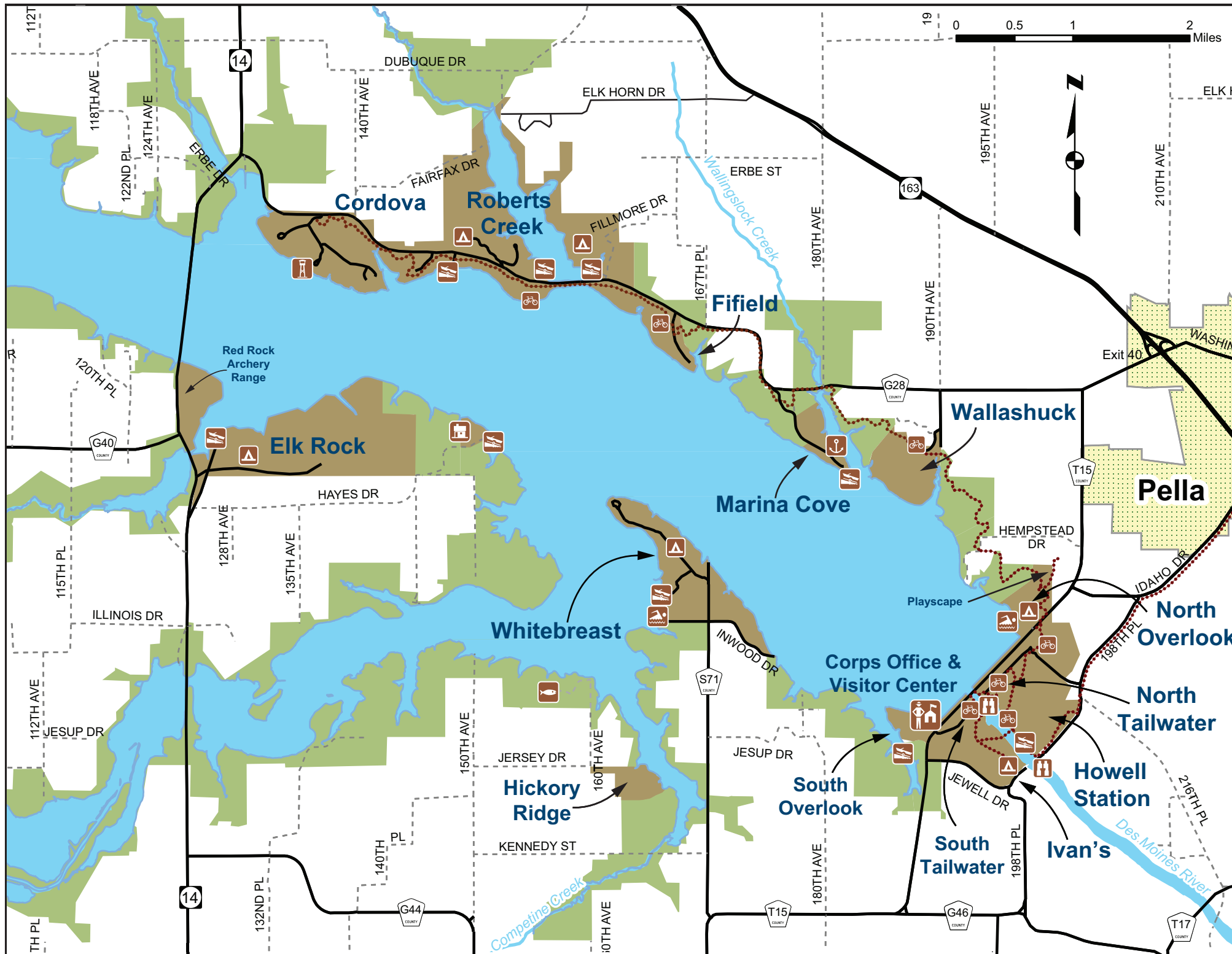


-- LEGEND --

Public Lands	Towns/Cities
Developed Recreation Lands	Neal Smith National Wildlife Refuge
Volksweg Bike Trail	Wildlife Refuge Area
	Other IDNR Area



0 1 2 4 6 8 Miles



Welcome to Iowa's Largest Lake



Lake Red Rock has over 15,000 surface acres of water at normal conservation pool, which is 742 feet above sea level. Located on the Des Moines River just 45 miles southeast and downriver from Des Moines, the reservoir collects runoff and drainage from over 12,320 square miles of Iowa and southern Minnesota land. This protects communities and agriculture lands downstream from the Red Rock Dam. The maximum flood control pool is 780 feet above sea level, over 33 miles long, and covers 65,500 acres. Other lake area benefits include numerous recreational opportunities and natural resources on the water and surrounding public lands.

Project Office & Visitor Center Hours

Mon - Fri 7:30 a.m. - 4:00 p.m

Additional Weekend Hours (Mar - Oct)
Sat - Sun 12:00 - 4:00 p.m.

Legend

- Towns/ Cities
- Gravel Roads
- Paved Roadways
- Volsweg Bike Trail
- Campground
- Marina
- Boat Ramp
- Fishing Pond
- Watchable Wildlife Area
- Volsweg Trailhead
- Public Lands
- IDNR Ranger Office
- Cordova Park Tower
- Developed Recreation Areas

Emergency/Information

All Emergency Services.....dial 911

US Army Corps of Engineers
Lake Red Rock Project
1105 Hwy T15, Knoxville, IA 50138
(641) 828-7522 or (641) 628-8690
www.lakeredrock.org
www.facebook.com/lakeredrock

Roberts Creek County Park
Park Ranger
1617 Fillmore Avenue
Otley, IA 50214
(641) 627-5507
www.mycountyparks.com

Elk Rock State Park
Park Ranger
811 146th Avenue
Knoxville, IA 50138
(641) 842-6008
www.iowadnr.gov

Cordova County Park
Park Ranger
County Naturalist
1378 Highway G-28
Otley, IA 50214
(641) 627-5935
www.mycountyparks.com

Parks	Boat Ramp	Bicycle Trail	Camping	Primitive Camping	Dump Stations	Electrical Sites	Fish Cleaning Stations	Group Camp Areas	Hiking Trail	Horse Trails	Information	Rental Cabins	Marina	Picnic Areas	Playground	Restrooms	Showers	Swimming Beach	Water
Fifield																			
Hickory Ridge																			
Howell Station																			
Ivan's																			
Marina Cove																			
North Overlook																			
North Tailwater																			
South Overlook																			
South Tailwater																			
Wallashuck																			
Whitebreast																			
Visitor Center																			
Elk Rock																			
Cordova																			
Roberts Creek																			

- Corps Managed Area
 - State Managed Area
 - Marion County Managed Area
 - Indicates Universally Accessible Facilities Available

To reserve a campsite at Lake Red Rock:
www.recreation.gov (Corps managed)
www.reserveiaparks.com (IDNR Managed)
www.mycountyparks.com (Roberts Creek)